



## Bluenose Series - Sailing Instructions

### Saturday September 15th, 2018

---

#### 1) MANAGEMENT AND RULES

- a) The races will be under the management of the Grosse Ile Yacht Club Race Committee, which will have full and final authority in establishing the racing articles and in interpreting the rules. The Series will be governed by the RACING RULES of SAILING (RRS), and the prescriptions of the UNITED STATES SAILING ASSOCIATION except as modified by these sailing instructions, which shall take precedence if conflicts occur. In addition, yachts shall abide by all rules as prescribed by their rating rule (PHRF, MORC, or JAM).

#### 2) ENTRIES

- a) Entry is open to all monohull sailing auxiliaries that meet the Federal Requirements for Safety and Lighting. The Skipper must ensure that the yacht is well found, thoroughly seaworthy, and that the hull, spars, rigging, sails, and all equipment is properly maintained and stowed and that the crew knows where it is kept and how it is used. The minimum size for any yacht wishing to enter shall be 20 feet LOA unless it has a valid PHRF or MORC certificate.
- b) The safety of a yacht and its crew is the sole and inescapable responsibility of the skipper. It shall be the complete and unlimited responsibility of each skipper to decide whether to start, continue, or finish a race. Skippers must be a member of a yacht or sail club, or other organization affiliated with a national sailing authority. All yachts shall be manned by a competent crew who are physically fit to face adverse conditions.
- c) Any changes to these Sailing Instructions will be posted on the [GIYC website](#), before 10:00 am on Saturday, September 15th, 2018.
- d) Personal flotation devices or harnesses are recommended to be used.
- e) Participants may enter the race by filling out the Race Entry Form (Located on [www.giyc.com](#) and [www.noticeofrace.net](#)) and returning it to the Race Committee Chairman, before the end of the skippers meeting with the proper fees.
- f) Racers must also register their boat on [www.noticeofrace.net](#)
- g) A class must have at least two entries participating in the race to have a class start.
- h) If sufficient entries are received, a one design class may be granted their own start.

#### 3) SAIL NUMBERS

- a) Sail numbers must be carried on both sides of mainsail and overlapping headsails. Spinnakers must have sail numbers on at least one side, in compliance with RRS Appendix H. FINISH TIMES MAY NOT BE TAKEN if sails are not numbered as registered.

#### 4) RATINGS

- a) All yachts entering and racing must have a current valid PHRF certificate. Ratings will be based on the official 2018 LE-PHRF ratings for Spinnaker and JAM classes. Entries not having an official rating certificate may be ASSESSED A PENALTY of Seven [7] seconds per mile.
- b) The following conditions will apply to yachts racing in the JAM Class:
  - i) Whisker poles may be used to extend the jib clew when sailing downwind. The whisker pole may be extended no further than the 'J' dimension, and shall be attached to the mast when in use.
  - ii) Except for the use of a pole as described above, only sail and rig combinations which the yacht is designed to carry when sailing close-hauled may be employed off the wind.
  - iii) Off wind staysails or reaching jibs are not permitted. Jibs must be attached to their stay for their entire length of luff when hoisted.
  - iv) ONLY ONE [1] HEADSAIL IS ALLOWED AT A TIME

## 5) SIGNALS

- a) Should the Race Committee need to postpone a race, they will hoist the Postponement signal, which is a red and white striped answering pennant. All classes that have not started will be postponed as follows: The Race Committee will sound two (2) horns, drop all other flags and raise the answering pennant. When the race committee boat resumes the starting sequence they will lower the answering pennant, and will sound one horn blast. The warning signal for the next class to start will be hoisted one (1) minute after the answering pennant is lowered and the starting sequence is resumed.

## 6) START

- a) Races will be started using RRS rule 26.
- b) The starting line will be marked by the race committee flag on the committee boat, and the WNATR "C" buoy, located approximately 3 NM southeast of GIYC.
- c) The committee boat will attempt to acknowledge any boats on the course side of the starting line at her starting signal by one or more of the following: displaying code flag X (white with blue cross), sounding a horn for each premature starter, and hailing the sail number or boat name, either verbally or on VHF Ch 71. Failure of the committee boat to use these signals, or failure of a competitor to observe these signals will not excuse a premature start. It is the responsibility of each yacht to make a proper start.
- d) The committee boat may utilize a protection buoy when starting all classes. This buoy will be approximately five yards from the committee boat. This buoy is considered an extension of the committee boat. No boat may properly start between the protection buoy and the committee boat.

## 7) FINISH

- a) The finish line will be designated as between the Race Committee flag on the committee boat and the WSSC WNATR "C" Mark.
- b) For each race, there will be a two (2) hour time limit for each class from the time of class start to the first boat in the class to finish. A class will remain racing as long as one boat finishes within the time allowance.

## 8) SCORING

- a) The Low Point Scoring System, RRS Rule A2, applies.
- b) If sufficient entries are received, classes may be split.
- c) A boat that does not start (DNS) will be scored the point total of the number of boats registered for the class. A boat that starts but does not finish (DNF) will be scored the number of boats that finish, plus one. A boat that is disqualified (DSQ) is scored the number of boats registered, plus one.
- d) If four races are sailed, boats will be allowed to exclude their highest score. This changes the RRS.

## 9) RADIO COMMUNICATION

- a) VHF Channel 71 will be used for communication, as well as for notification of a race being canceled due to severe weather conditions.
- b) Any yacht which retires from the race shall contact the committee boat on channel 71.

## 10) PROTESTS

- a) Yachts protesting must follow Part 5, Section A of RRS, except there shall be no charge for filing a protest.
- b) A boat wishing to protest must file their protest with the RACE COMMITTEE within two (2) hours of the last boat to finish.
- c) Protest shall be written on USSA forms (see p.119 – 122 of the RRS).
- d) There will be no appeals allowed of protest committee decisions. Protest committee decisions will be considered final.
- e) The two turns penalty for violations of part 2 of the RRS is replaced by the one turn penalty for all races.

## 11) STARTING SEQUENCE

- a) Races will be started by using RRS 26

#	Class	Flag Color	Start Time
1	Spinnaker A	Blue	11:00 am
2	Spinnaker B	Gray	11:05 am
3	JAM	Green	11:10 am

## 12) SKIPPERS MEETING

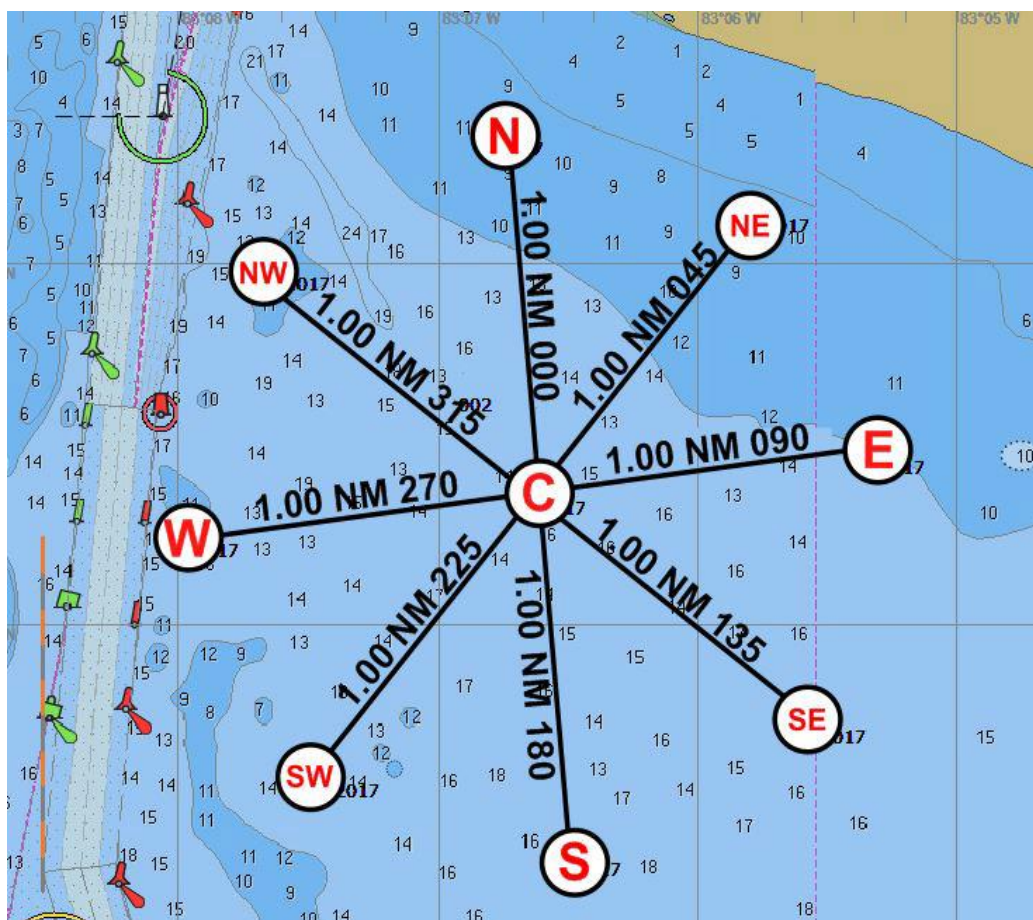
- a) There will be a skipper's meeting at 9:00 am on Saturday, September 15th, 2018 on the patio above the bar at GIYC. Coffee and pastries will be available.

## 13) AFTERGLOW

- a) All participants are invited to Grosse Ile Yacht Club after the race to enjoy the afternoon with fellow competitors on the main dock. We will award the Flags, provide a free keg of beer, and we will have the grill fired up to cook grilled chicken, hamburgers, hot dogs, corn on the cob, etc (\$).

## 14) COURSES AND MARKS

- a) The courses to be sailed will be selected from the list of courses included on Appendix A of these Sailing Instructions.
- b) The series will consist of a maximum of 4 short races, sailed consecutively, on the waters of western Lake Erie, utilizing the West Shore Sail Club WNATR marks.
- c) At the conclusion of the first race, the second race will begin after a short break. Additional races will follow consecutively.
- d) The committee boat will announce the course to be sailed on VHF channel 71.
- e) No warning signal will commence after 4:00 pm.



<b>C</b>	<b>N42.01.3854</b>	<b>W083.06.6223</b>
<b>E</b>	<b>N42.01.4959</b>	<b>W083.05.3077</b>
<b>NE</b>	<b>N42.02.1653</b>	<b>W083.05.8038</b>
<b>N</b>	<b>N42.02.3802</b>	<b>W083.06.7850</b>
<b>NW</b>	<b>N42.02.0057</b>	<b>W083.07.6806</b>
<b>W</b>	<b>N42.01.2687</b>	<b>W083.07.9782</b>
<b>SW</b>	<b>N42.00.6022</b>	<b>W083.07.4780</b>
<b>S</b>	<b>N42.00.3872</b>	<b>W083.06.4776</b>
<b>SE</b>	<b>N42.00.7527</b>	<b>W083.05.5806</b>

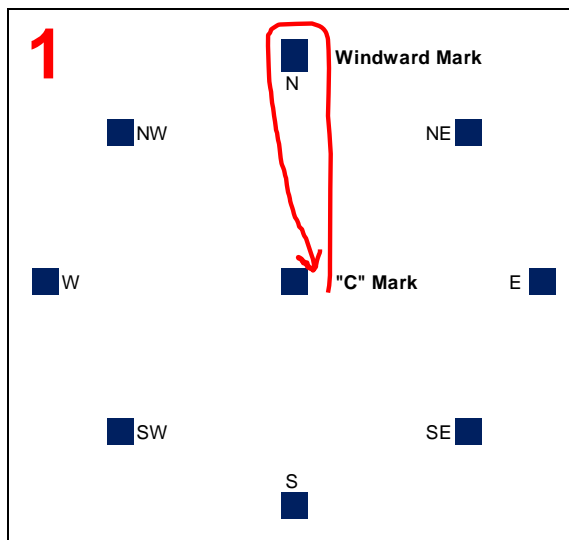
# Bluenose Series - Course Table

Before each race the Committee Boat will announce the:

Windward Mark (WM) and Course Number

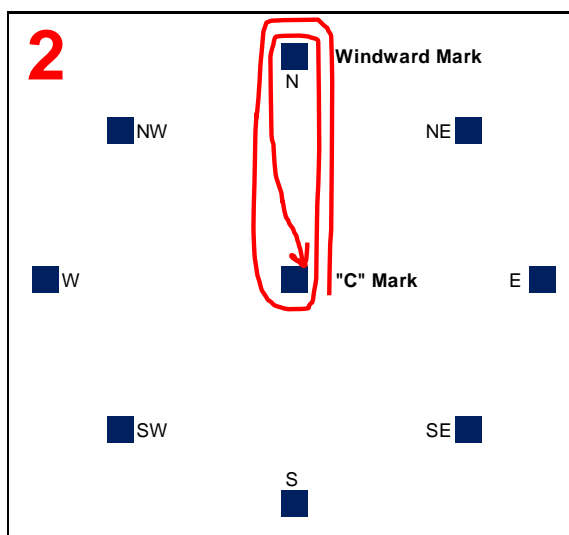
## Course 1 *(Distance depends on WM, ~2 Nm)*

- Start at "C"
- Proceed to the WM, and leave it to Port.
- Finish at "C"



## Course 2 *(Distance depends on WM, ~4 Nm)*

- Start at "C"
- Proceed to the WM, and leave it to Port.
- Proceed to "C", and leave it to Port.
- Proceed to the WM, and leave it to Port.
- Finish at "C"



## Course 3 *(Distance depends on WM, ~4.8 Nm)*

- Start at "C"
- Proceed to the WM, and leave it to Port.
- Proceed to the next mark on the circle, (counter-clockwise from the WM), and leave it to Port.
- Proceed to "C", and leave it to Port.
- Proceed to the WM, and leave it to Port.
- Finish at "C"

